



# ADMINISTRATIVE NOTE

Meeting of Agricultural Chief Scientists (MACS)

26–28 May 2025

PROTEA HOTEL THE RANCH RESORT  
POLOKWANE, LIMPOPO, SOUTH AFRICA



2025

Edited, design and layout by

Directorate: Media and External Communication

Department of Agriculture

Private Bag X144, Pretoria, 0001

# CONTENTS

1. Introduction	1
2. Accommodation	2
3. Air transfers	5
4. Accreditation	6
5. Immigration	6
6. Immunisation	7
7. Environmental Health	8
8. General Information	8
9. Places of Interest	10
10. Tour Operators	12



# TOURISM ATTRACTIONS

# ADMINISTRATIVE NOTE

MACS

## ABOUT

This Administrative Note has been designed to provide all delegates with essential information regarding logistical and administrative arrangements for the meeting. Updates on this document will be communicated to delegates *via* email.



## 1. INTRODUCTION

The G20 Meeting of Agricultural Chief Scientists (G20 MACS) will be held in Polokwane, Limpopo from 26 to 28 May 2025, at the Protea Hotel The Ranch Resort.

The South African G20 Presidency welcomes you to Polokwane in Limpopo Province, South Africa. Limpopo is a region known for its stunning scenery, rich traditions, and friendly spirit. As South Africa's "Gateway to Africa," Limpopo provides an immersive experience filled with cultural vibrancy and natural beauty.

Limpopo's rich cultural identity is deeply embedded in daily life, where traditions are celebrated through art, music, and vibrant community gatherings. These experiences provide visitors with an opportunity to connect with the region's timeless heritage. Visitors can enjoy dynamic dance performances, explore bustling markets, and participate in traditional crafts such as pottery and beadwork. These interactions foster a deep appreciation for the artistry and stories that have been passed down through generations.

The G20 MACS plays a crucial role in fostering collaborative efforts to implement science-based solutions for achieving sustainable agricultural production systems, along with ensuring food and nutritional security through enhanced cooperation among G20 countries.



## 2. ACCOMMODATION

Shuttles will be available to transport the delegates from hotels to the venue and back. These shuttles will be identified by G20 stickers on the windows.

### 2.1. Protea Hotel The Ranch Resort, Polokwane



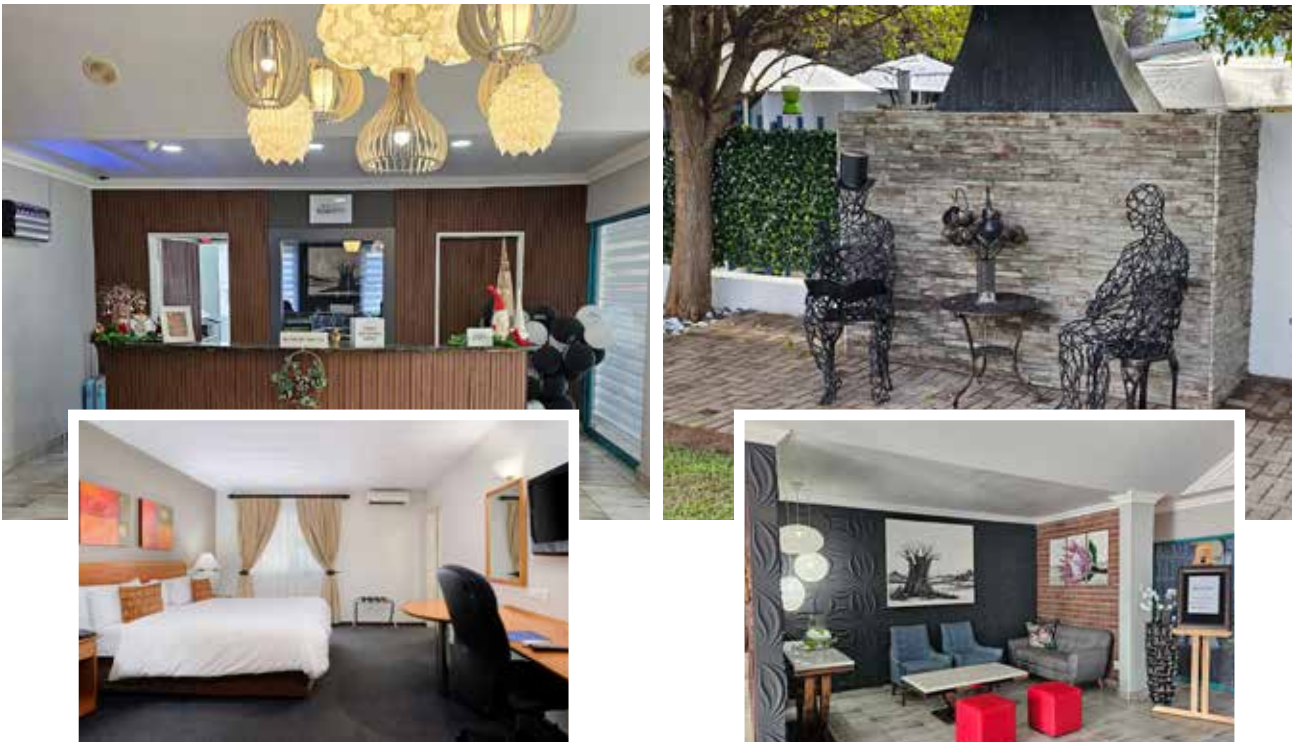
<b>Protea Hotel The Ranch (4,5-star hotel)</b>	
Number of rooms reserved	<b>149</b>
Standard king	<b>20</b>
Standard twin	<b>33</b>
Chalet rooms	<b>40</b>
Luxury suite	<b>4</b>
Family suite	<b>2</b>
Two double bedrooms	<b>29</b>
Superior rooms	<b>19</b>
Presidential rooms	<b>2</b>
Telephone number	<b>015 290 5000</b>
Site	<a href="https://theranch.co.za/">https://theranch.co.za/</a>
Rates per night inclusive of dinner, bed and breakfast	<b>R1 900,00</b>
G20 booking code	<b>1662713 or 1662463</b>

2.2. Meropa Casino



<b>Meropa Casino and Entertainment World (4,1-star hotel)</b>	
Number of rooms reserved	<b>102</b>
Standard king	<b>54</b>
Standard twin	<b>26</b>
Paraplegic	<b>2</b>
Interleading	<b>8</b>
Twin bed interleading	<b>8</b>
Executive	<b>4</b>
Distance from the meeting venue	<b>20,09 km, 19 min., Route: R101</b>
Telephone number	<b>015 290 5400</b>
Site	<a href="https://www.meropa+casino">https://www.meropa+casino</a>
Rates per night inclusive of dinner, bed and breakfast	<b>R1 680,00</b>
G20 booking code	<b>Agric250525</b>

**2.3. Protea Hotel Landmark**



<b>Protea Hotel Polokwane Landmark (4-star hotel)</b>	
Number of rooms reserved	<b>80</b>
Standard king	<b>4</b>
Standard twin	<b>74</b>
Paraplegic	<b>1</b>
Suite	<b>5</b>
Distance from the meeting venue	<b>20,09 km, 19 min., Route: R101</b>
Telephone number	<b>015 290 5400</b>
Site	<a href="https://www.marriot.com/en-us/hotels/ptgla-protea-hotel-polokwane-landmark/overview/">https://www.marriot.com/en-us/hotels/ptgla-protea-hotel-polokwane-landmark/overview/</a>
Rates per night inclusive of dinner, bed and breakfast	<b>R1 700,00</b>
G20 booking code	<b>576351</b>

### 3. AIRPORT TRANSFERS

South African authorities will expedite immigration procedures for all foreign delegates attending the G20 MACS in 2025.

The delegates arriving internationally might first enter the country through the OR Tambo International Airport in Johannesburg (JNB) or the Cape Town International Airport (CPT), both of which serve as key international gateways with connections to major global cities such as London, New York, Dubai, and Frankfurt.

**Please Note:**

- The OR Tambo International Airport may experience longer waiting times owing to increased international passenger traffic. It is recommended that delegates allow extra time for connecting flights to Polokwane.
- You must go through passport control procedures and then proceed to collect your luggage for customs clearance at the OR Tambo International Airport/Cape Town International Airport. After clearing customs, you will need to re-check in your luggage for your domestic flight to Polokwane.

Below is the flight schedule for Airlink flights from the OR Tambo International Airport to the Polokwane Airport:

Monday to Friday	Saturday	Sunday
06:10	09:35	09:35
09:35	14:20	16:20
16:20		

There will be a G20 information desk at the OR Tambo and Polokwane airports, which will have information about shuttle services for the delegates. Delegates are encouraged to book connecting flights to Polokwane as shuttle services will only be provided for delegates from the Polokwane Airport to the designated hotels and meeting venue for the G20 MACS from 24 to 30 May 2025 for all flight times. Shuttle services will also be provided from designated hotels to the meeting venue and back.

Delegates whose flights are scheduled to land late in the evening are encouraged to sleep over at OR Tambo International Airport hotels as connecting flights to the Polokwane Airport may not be available late evening.

## 4. ACCREDITATION

Participation in the G20 MACS is strictly limited to registered delegates. The registration and accreditation process for all officials attending the MACS will be conducted online. There is no provision for virtual participation.

### **Accreditation to access the meeting venue (The Ranch Resort) will be as follows:**

1. G20 member states: 1+ 3 (Head of delegation plus delegates).
2. Invited countries: 1+2 (Head of delegation plus delegates).
3. International organisations: 1+1 (Head of delegation plus delegate).
4. Regional organisations: 1+1 (Head of delegation plus delegate).

### 4.1 Accreditation System

The accreditation system will be available for the online registration process from 6 to 16 May 2025.

- Each participating country, institution or international organisation and regional organisation must nominate a delegate accreditation officer (DAO)/nodal point to coordinate the registration process of his/her respective delegation. The DAO nomination form will be circulated by 22 April 2025 and the delegates will complete and return by 03 May 2025.
- The South African country liaison officers will issue individual badges for all accredited delegates, according to the information provided by the DAO. Collection of the delegate badges will start on 24 May 2025, 13:00 at the meeting venue.

## 5. IMMIGRATION

All guests' passports should be valid for at least 30 days after the expected date of departure from South Africa and should have at least two unused pages when presented for endorsements.

A valid visa (if applicable) should be obtained from the nearest South African Embassy or High Commission in each country. NO visas will be issued upon arrival in South Africa.

For further information on visa requirements and exemptions, visit the Department of Home Affairs (<https://www.dha.gov.za/>).

### 5.1 Online traveller declaration

The online traveller declaration must be filled in before departure to allow smooth transition, even if there is nothing to declare.

The following link can be used: <https://www.sars.gov.za/wp-content/uploads/Ops/Forms/TC01-Traveller-Card-External-Form.pdf>

## 6. IMMUNISATION

South Africa is signatory to the International Health Regulations, 2005 (IHR, 2005) and is committed to safeguarding the health of both citizens and persons travelling to the country.

- To ensure compliance with the IHR 2005 policies and legislative prescripts, health measures will be applied to delegates entering the country.
- All travellers will be subjected to screening by Port Health officials at the point of entry, which will include temperature screening.
- Persons who, during screening, are found to have signs and symptoms consistent with communicable diseases, will be subjected to further assessment, which may include medical examination at the persons' cost.
- This exercise is conducted as a preventive measure at the ports of entry against the spread of communicable diseases like yellow fever, hepatitis A and B, malaria, etc.
- Should a delegate experience any signs and symptoms consistent with a communicable disease while in South Africa, they are advised to seek medical attention and inform the medical practitioner of their travel history.
- In line with the World Health Organization (WHO) recommendations, aircrafts arriving from a yellow fever or malaria endemic area must be disinfected for the control of mosquito vectors.
- On arrival at the point of entry, proof of disinfection must be provided to the health specialists prior to the delegates disembarking.

### 6.1 Yellow Fever Vaccination Requirements in South Africa

In line with the International Health Regulations 2005 (IHR 2005) and the country's Yellow Fever Policy, South Africa requires a valid yellow fever certificate from all citizens and non-citizens over one year of age:

- travelling from a yellow fever-risk country; or
- having been in transit exceeding 12 hours through an airport of a country with a risk of yellow fever transmission.

Therefore, travellers arriving in the country from an area determined by the WHO to be at risk of yellow fever transmission are required to produce a valid International Certificate of Vaccination against yellow fever.

Travellers who are not in possession of a valid certificate of vaccination against yellow fever may be refused entry or placed under quarantine surveillance for a period not exceeding six days or until their certificate becomes valid.

Travellers who, for medical reasons, cannot receive a yellow fever vaccination, must be in possession of a signed, valid waiver letter from a travel health practitioner.

Travellers who are in possession of a waiver letter will be required to report any fever or other symptoms to a health practitioner and be placed under quarantine surveillance.

## 7. ENVIRONMENTAL HEALTH

- The tap water in South Africa is safe to drink.
- Food safety is a priority and all food supplies to the event will be monitored from preparation to distribution.
- Smoking policies regarding public places are enforced.

## 8. GENERAL INFORMATION

### 8.1 Climate

South Africa has a diverse climate, ranging from temperate in the interior regions to subtropical along the eastern coastline. The MACS host city, Polokwane, has a semi-arid climate. Its average temperature ranges from 10 °C to 24 °C, with warm days and cool nights. Delegates are advised to bring light clothing for the daytime and warmer layers for the evenings.

### 8.2 Payment Methods and Currency

In South Africa, credit and debit cards (Visa and MasterCard) are widely accepted at most businesses, including hotels, restaurants, and retail stores. However, it is important to note that some smaller vendors, particularly at markets or rural areas, may only accept cash. It is advisable to carry South African Rand (ZAR) for such situations. Currency exchange services are available at airports, major hotels, and dedicated currency exchange offices like Travelex and Western Union. These services offer cash exchange from various currencies into the Rand. ATMs are readily available throughout the country, making it easy to withdraw cash using international debit or credit cards.



### 8.3 Voltage and Power Sockets

South Africa operates on 230 V electricity with a frequency of 50 Hz. The power sockets used are primarily Type M (the large three-pin plug), although Type C (the standard European two-pin plug) is sometimes used. It is advisable for visitors to bring a universal adapter, as plug types may vary across regions and accommodation options.

For safety, many of South Africa's electrical sockets are recessed, requiring the plug to be fully inserted before connection is made. Portable voltage transformers are available if needed.



## 9. PLACES OF INTEREST

### 9.1 Kruger National Park: Wildlife Experience



One of Africa's largest game reserves, offering unparalleled wildlife viewing opportunities. Where nearly two million hectares of unrivalled diversity of life forms fuse with historical and archaeological sights—this is real Africa! The world-renowned Kruger National Park offers a wildlife experience that ranks among the best in Africa.

The Kruger National Park is a two and half hour-drive from Polokwane with tarred and well-maintained roads. It remains a popular tourist attraction for international and domestic visitors through self-drives and guided tours undertaken by tour operators.

<https://www.sanparks.org/parks>

### 9.2 Bakone Malapa Museum: Heritage and Culture

Located near Polokwane, this museum offers insights into the traditional lifestyle of the Bapedi people (also known as the Northern Sotho people). Visitors can engage in activities like pottery and bead-making. Bakone Malapa is situated a mere 12 km outside Polokwane and provides an experience steeped in the heritage and culture of the Bapedi people.

[www.sa-venues.com/things-to-do/limpopo/visit-the-bakone-malapa-museum/](http://www.sa-venues.com/things-to-do/limpopo/visit-the-bakone-malapa-museum/)

### 9.3 Waterberg Biosphere Reserve: Biodiversity and Conservation

A UNESCO-designated area known for its rugged beauty and biodiversity. It is a 650,000-hectare savanna rich in biodiversity, unique rock formations and San rock art; balancing conservation, tourism and community development through initiatives like the Lapalala Wilderness School.

The Waterberg Biosphere Reserve is centrally located in the Waterberg District of Limpopo, a two-hour drive from both Polokwane and Johannesburg.

[www.waterbergbiosphere.com](http://www.waterbergbiosphere.com)

### 9.4 Thathe Vondo Forest: Biodiversity and Conservation

Nestled in the enchanting Limpopo Province, the Thathe Vondo Forest is a place of breathtaking natural beauty and profound cultural significance. Revered by the Venda people, this majestic forest is steeped in myths and legends, offering visitors a tranquil escape to lush greenery and a deep connection to South Africa's heritage.

The forest is located in the Vhembe District of the province, a two-hour drive from Polokwane.

[www.south-africa.net/thathe-vondo-forest](http://www.south-africa.net/thathe-vondo-forest)

### 9.5 Lake Fundudzi: Culture and Heritage

In Limpopo's Soutpansberg region, Lake Fundudzi is a rare natural inland lake revered by the Venda people as sacred. Steeped in legend, including tales of a python god, the lake invites visitors to experience its serene beauty and cultural rituals, such as the unique "ukodola" greeting tradition.

### 9.6 Magoebaskloof Canopy Tours: Adventure Tourism

Experience the thrill of zip-lining through indigenous forests. If you are an adventurous tourist and thrill-seeker, this one is for you.

The tour includes awe-inspiring slides and platform viewpoints over three giant waterfalls, each tumbling up to 20 metres into the sparkling river below.

Located in the picturesque and quaint town of Magoebaskloof, the Magoebaskloof Canopy Tours is an hour's drive from Polokwane.

[www.canopytour.co.za/locations/magoebaskloof/](http://www.canopytour.co.za/locations/magoebaskloof/)

### 9.7 Bela-Bela Hot Springs: Family and Recreation

The Bela-Bela Hot Springs are renowned for their soothing mineral-rich waters, offering visitors a relaxing retreat and therapeutic escape in a serene natural setting.

The Bela-Bela Hot Springs is a popular vacation spot for families and tourists throughout the year. It is a two-hour drive from both Polokwane and Johannesburg.

[www.southafrica.net/gl/en/travel/article/bela-bela-and-its-relaxing-hot-springs](http://www.southafrica.net/gl/en/travel/article/bela-bela-and-its-relaxing-hot-springs)

### 9.8 Blouberg Nature Reserve: Nature and Wildlife

The Blouberg Nature Reserve is renowned for its stunning landscapes, including tamboti woodlands and iconic baobab trees, as well as hosting the world's largest breeding colony of Cape vultures.

Visitors can explore rich biodiversity, spot wildlife like sable antelope, and enjoy breathtaking views. It is ideal for hiking and bird-watching, offering stunning views and diverse flora and fauna. Located an hour's drive from Polokwane.

[www.blouberg.gov.za/tourism](http://www.blouberg.gov.za/tourism)

### 9.9 Setsong African Tea Crafters: Heritage and Culture

Take part in a tour around the Setsong tea manufacturing plant that incorporates a business that is constituted of meaningful partnerships with rural communities. This company crafts exceptional herbal tea infusions using untapped indigenous plants.

The business is committed to promoting health and African indigenous knowledge, harnessing indigenous flora primarily from Limpopo. Their tea blends incorporate untapped plants, preserving tradition and offering a cultural experience.

### 9.10 Makapan Valley World Heritage Site: Culture and Heritage

Makapan Caves, also known as Makapansgat, are a significant archaeological World Heritage Site and part of the Fossil Hominid Sites of South Africa located in the Waterberg area of Limpopo. The caves are renowned for their paleontological and archaeological discoveries, including early hominin fossils like *Australopithecus africanus* and evidence of early human occupation. The caves also hold historical significance. About a 30-minute drive away from the meeting venue, this cultural site offers tourists an exciting experience into the heritage and culture of the province.

## 10 TOUR OPERATORS

Tour operators offer a variety of tour packages to tourist attraction sites, providing an opportunity for delegates to take some time off and enjoy the sites and sounds of the city and beyond.

No.	Tour operator	Services	Email address	Cell phone
1	Vuwa Transport Services	Packages and shuttles	<a href="mailto:stanley@vuwatransport.co.za">stanley@vuwatransport.co.za</a>	084 602 9244
2	Vast Horizon Tours	Packages	<a href="mailto:steff@vasthorizon.co.za">steff@vasthorizon.co.za</a>	079 365 0204
3	Merwalo Tourism and Associates	Packages	<a href="mailto:merwalotours@gmail.com">merwalotours@gmail.com</a>	073 224 3608
4	Borutho Tours and Travel	Packages	<a href="mailto:liornamartina@gmail.com">liornamartina@gmail.com</a>	073 040 1622
5	Vuntsi Shuttle Services (PTY) LTD	Packages and shuttles	<a href="mailto:info@vuntsi.co.za">info@vuntsi.co.za</a>	'072 858 7979
6	Boke Tours	Packages and shuttles	<a href="mailto:info@boketours.co.za">info@boketours.co.za</a>	015 065 0160/061 446 6192
7	Nhlamulo Destinations	Packages	<a href="mailto:ceo@nhlamulodestinations.co.za">ceo@nhlamulodestinations.co.za</a>	078 971 0441
8	Shidikila	Packages and shuttles	<a href="mailto:sidika247@gmail.com">sidika247@gmail.com</a>	078 405 3111
10	Shumba and the Safaris Tours	Packages and shuttles		067 658 6735
11	Golden Age Adventures		<a href="mailto:lekaujohannes@gmail.com">lekaujohannes@gmail.com</a>	083 612 9267